

BLUEBOX

Technical Specifications

Last Update: September 15, 2019

Contact Info

Technical Manager

Bendik Egenes Dyrli
+47 992 27 030
bendik.dyrli+bluebox@gmail.com

Assistant Technical Manager

Frida Marie Ording
+47 957 91 997
fmo@hotmail.no

Practical Information

Load-in

The available load-in areas are:

Loading Dock with double doors leading into storage used by stage techs and further into the stage area and side stage.

Loading Dock is a concrete slab at with a height of X(must be measured).

Side double doors leading into audience and FOH area are also available if needed. Side doors are 15cm above ground. Audience area has a wheel-chair elevator to the stage which can be used to move gear onto the stage from FOH.

Stagehands

Extra stagehands can be made available if requested in a timely manner. Otherwise audio and light techs will be made available.

Parking

Public Parking on campus close to the avenue.

Parking space for buses, semitrailers and trucks are available but must be notified of eventual needs beforehand. However, bringing own cables is highly encouraged as Bluebox do not have cables to lend. Power for night liners are available at Bluebox (16A).

Restrictions

Max continuous SPL: 100dB Leq15. This will be enforced by our house techs.

Arrival

When driving towards Grimstad, following highway E18 take the exit denoted "Grimstad" and "Universitetet". Follow the signs toward "Universitetet" until you reach the Ericsson building and drive along it until you see the university.

It is advised to drive onto the parking lot to the left of Bluebox (the literal blue box building) and towards the I4Health building, thus arriving behind Bluebox and by the Load-in Areas.

Sound Specification

FOH

Mixer:	Soundcraft Vi1 32in, 27out locally	1 unit
	Soundcraft Vi4/6 Stagebox 48in, 16out	1 unit

PA System

Mid/High:	JBL VT4886	2x 8units
Subs:	JBL VT4883	2x3 units
	JBL ASB6125	4 units
Processing:	Macro-Tech 9000i	4 Units
	Soundweb BLU-100	1 Unit
	Cisco SG 100-16	1 Unit

Monitors and Lines

Monitor:	JBL VP2712MDP	7 Units
Lines:	Klotz 12Channel, 15m	2 Units
	Klotz 12Channel, 20m	2 Units
	Connex Stagebox 12Channel	4 Units

Microphones

Wire:	BSS AR-133	8 Units
	AKG D-40	4 Units
	AKG -C518	4 Units
	AKG D-5	3 Units
	AKG C-547 BL	1 Unit
	AKG C-541 B	4 Units
	Shure SM 57	5 Units
	Shure Beta 58A	4 Units
	Shure Beta 52A	1 Unit
	Audix ADX-50	1 Unit
Wireless:	Shure GLXD24	2 Units

Mic Stands

K&M 233B	12 Units	Short stand with small disc with boom
K&M 25960	2 Units	Short stand with big disc with boom
K&M 260	3 Units	Long stand with big disc with boom
K&M 219/4B	7 Units	Long stand, 3-pod with boom
K&M	1 Unit	Short stand, 3-pod with boom

AV

A/V Preamp	Denon DN-A7100	1 Unit
Projector:	Optoma EW766	1 Unit
HDMI Matrix:	ATEN VS481B	1 Unit

Backline

Amp:	Fender Guitar Amp:	
	Hot Rod Deluxe	1 Unit
	Marshall Guitar Amp:	
	MG100HDFX	1 Unit
Ampeg Bass Amp:		
	BA115 HTP	1 Unit
Drumset:	Pearl Vision Drumkit:	12" Tom
		13" Tom
		16" Tom
		22" Kick
		14" Snare
	Sabian XS-20:	20" Ride
		14" Hihat
		16" Crash
DJ:	Pioneer CDJ-400	2 Units
	Pioneer DJM-300	1 Unit
	Pioneer CDJ-2000NXS2	2 Units
	Pioneer DJM-900NXS2	1 Unit

Lightning Specification

Dimmer

Okero 619-D	4 Units
Okero 6x13A Supply	2 Units

Fixtures

Movers:	Martin MAC 350 Entour	5 Units
Static:	Selecon Pacific	4 Units
		1000w 15-25 degrees
	Selecon Rama fresnel	6 units
		1200w
	DTS Par 64	22pcs
		1000w CP62
	DTS Par 64s	x Units
		1000w CP62
	DTS FAL1500	x Units
		1.5kW Strobe
	Sønico Tra c Light	1 Unit
		Red/Green Man
	Showtec LED Par	6 Units
		64 Short 18 x RGB
	Showtec Active Suntrip DMX	2 Units
	Showtec Showbar 4 Channels	2 Units
Other:	Hazer Unique Look 2.1	1 Unit
	Pulsar	Datasplitter 8-Way

FOH

Grand MA2 Command Wing	w/ 23" Touchscreen PC
Extra non-touch monitor	

Stage and Stage Rig

Stage Measurements

Width:	6,50m	
Depth:	6,00m	
Depth:	5,80m	1m distance from the front-edge of stage to stagecarpets

Stage height from ground level:	0,90m
Height, from stagefloor to ceiling:	6,30m
Max lift height, stagerig:	5,90m
Max lift height, frontrig:	6,00m
Stagefront - FOH	8,50m

Front rig

The front rig is 6m long. Prolyte X30D, motorized with two 250kg chain pulleys fastened in each end. Max WLL is 500kg.

Stage rig

The stage rig is 5.5m wide, 3.5m deep. Litec QX30, motorized with four 250kg chain pulleys fastened in each corner. Max WLL is 1000kg.

Cables

Front Rig		1pcs multicorecable with extensions
Stage Rig	Backside	2pcs 6ch multicorecable with extensions
	Middle	1pcs 6ch multicorecable with extensions
	Front	1pcs 6ch multicorecable with extensions

For more specific weight details for both front and stage rig please contact current Technical Manager or Co-Technical Manager.

Risers

Risers	2x1 meter	3 Units	Works with type A legs
	2x1m	6 Units	Works with type B legs
Riser Legs	35cm	16 Units	Type B
	45cm	9 Units	Type A
	75cm	8 Units	Type A
	100cm	12 Units	Type A

Power

Bluebox has a 400V TN-S distribution net. These span over 2 sound racks and 1 light rack.

The stage has the following distribution:

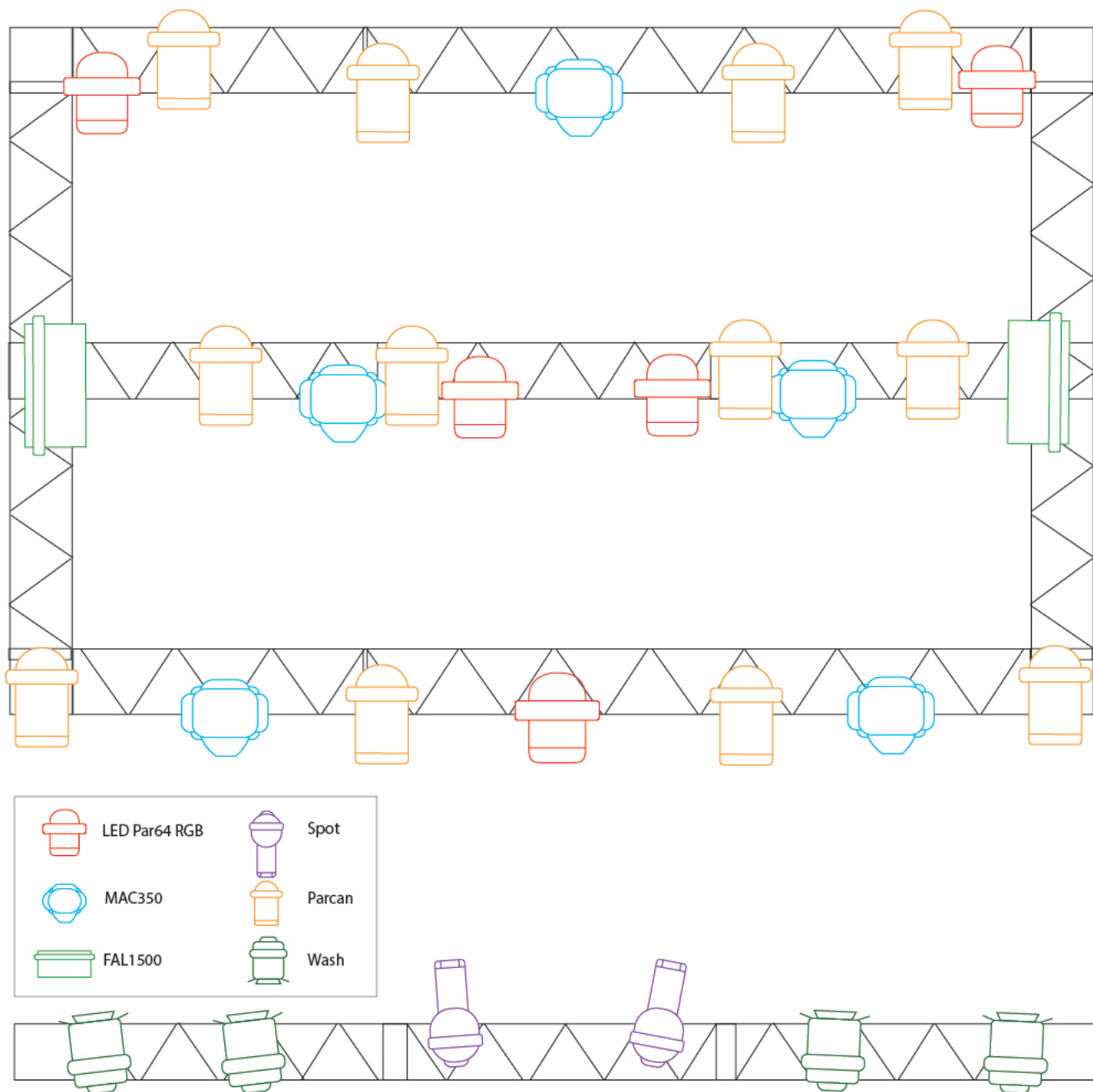
PH-563-9	Sound	3x40A+N	
		- PA	6 units 2x16A
		- Monitor and Backline	6 units 2x16A
		- Available for guestproductions	1 unit 3x16+N
PH-563-9	Lights		3x63A+N
		- Dimmers 1-4	3x63A+N each
PH-563-9		Fixed power no.1	3x63A+N
PH-563-9		Fixed power no.2	3x63A+N
PH-563-9		Available for guestproductions	3x63A+N

In addition, there are three 16A channels installed along the walls of the stage.

Current DMX patch

Fixture ID	Patch	Qty	Fixture Type	Notes
101	1.100	5	5 Mac 350 Entour 16 bit	
102	1.117			
103	1.134			
104	1.151			
105	1.168			
201	1.040	6	6 LED PAR 64 RGB Floor 00	
202	1.045			
203	1.050			
204	1.055			
205	1.060			
206	1.065			
301	1.025	2	Freq 5 Strobe 2 channel	
302	1.027			
	1.001 - 1.024	24	3 Dimmer 00	
	1.080	2	8 Sunstrip Active 10 Channel	
	1.090			
	1.510	1	7 Unique 2 00	Hazer

Current Light Plot



FOH